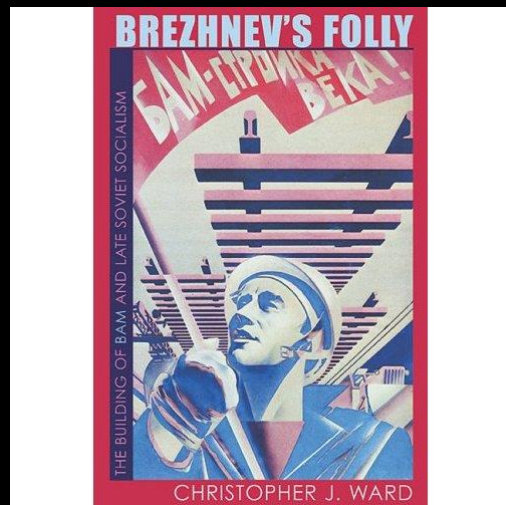


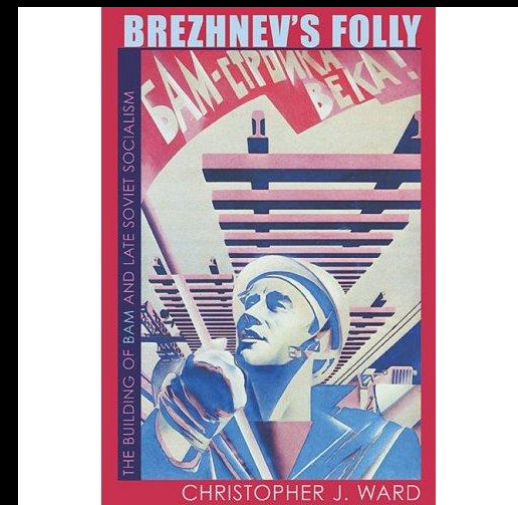


Stagnation or Stability?:

The Brezhnev Years from the Perspective of the Construction of the Baikal-Amur Mainline Railway (BAM)



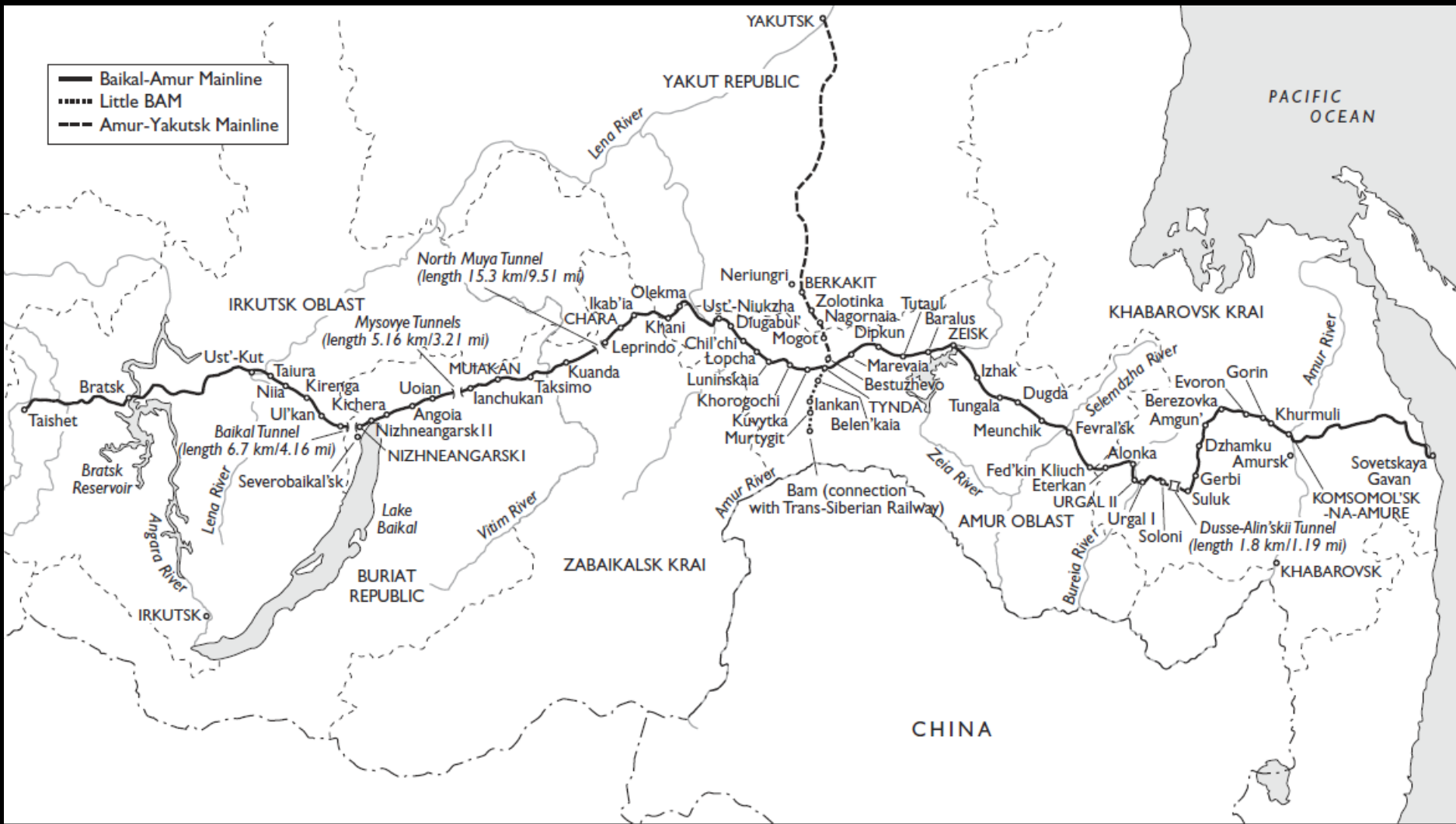
Dr. Christopher J. Ward
Clayton State University



A Photo Essay of the Baikal-Amur
Mainline Railway

Фотолетопис Байкало-Амурской
Магистрали





— Baikal-Amur Mainline
 Little BAM
 - - - Amur-Yakutsk Mainline

North Muya Tunnel
(length 15.3 km/9.51 mi)

Mysoye Tunnels
(length 5.16 km/3.21 mi)

Baikal Tunnel
(length 6.7 km/4.16 mi)

Dusse-Alin'skii Tunnel
(length 1.8 km/1.19 mi)

Bam (connection
with Trans-Siberian Railway)

YAKUT REPUBLIC

PACIFIC OCEAN

IRKUTSK OBLAST

KHABAROVSK KRAI

ZABAIKALSK KRAI

CHINA

BURIAT REPUBLIC

AMUR OBLAST

KOMSOMOL'SK
-NA-AMURE

YAKUTSK

Lena River

Amur River

Amur River

Zeia River

Bureia River

Vitim River

Angara River

IRKUTSK

Lake Baikal

Bratsk Reservoir

Sovetskaya Gavan

Amursk

Urgal I

Meunchik

Tynda

Zeinsk

Nizhneangarsk II

Severobaikal'sk

Ust'-Kut

Khurmuli

Fevral'sk

Tungala

Bestuzhevo

Lopcha

Ulan-Ude

Kichera

Taiura

Bratsk

Gorin

Evoron

Izhak

Mogot

Leprindö

Uoi'an

Kirenga

Nila

Taishet

Berezovka

Alonka

Dugda

Bestuzhevo

Chil'chi

Uoi'an

Kirenga

Nila

Taishet

Evoron

Alonka

Dugda

Bestuzhevo

Chil'chi

Uoi'an

Kirenga

Nila

Taishet

Berezovka

Alonka

Dugda

Bestuzhevo

Chil'chi

Uoi'an

Kirenga

Nila

Taishet

Evoron

Alonka

Dugda

Bestuzhevo

Chil'chi

Uoi'an

Kirenga

Nila

Taishet

Berezovka

Alonka

Dugda

Bestuzhevo

Chil'chi

Uoi'an

Kirenga

Nila

Taishet

Evoron

Alonka

Dugda

Bestuzhevo

Chil'chi

Uoi'an

Kirenga

Nila

Taishet

Berezovka

Alonka

Dugda

Bestuzhevo

Chil'chi

Uoi'an

Kirenga

Nila

Taishet

Evoron

Alonka

Dugda

Bestuzhevo

Chil'chi

Uoi'an

Kirenga

Nila

Taishet

Berezovka

Alonka

Dugda

Bestuzhevo

Chil'chi

Uoi'an

Kirenga

Nila

Taishet

Evoron

Alonka

Dugda

Bestuzhevo

Chil'chi

Uoi'an

Kirenga

Nila

Taishet

Berezovka

Alonka

Dugda

Bestuzhevo

Chil'chi

Uoi'an

Kirenga

Nila

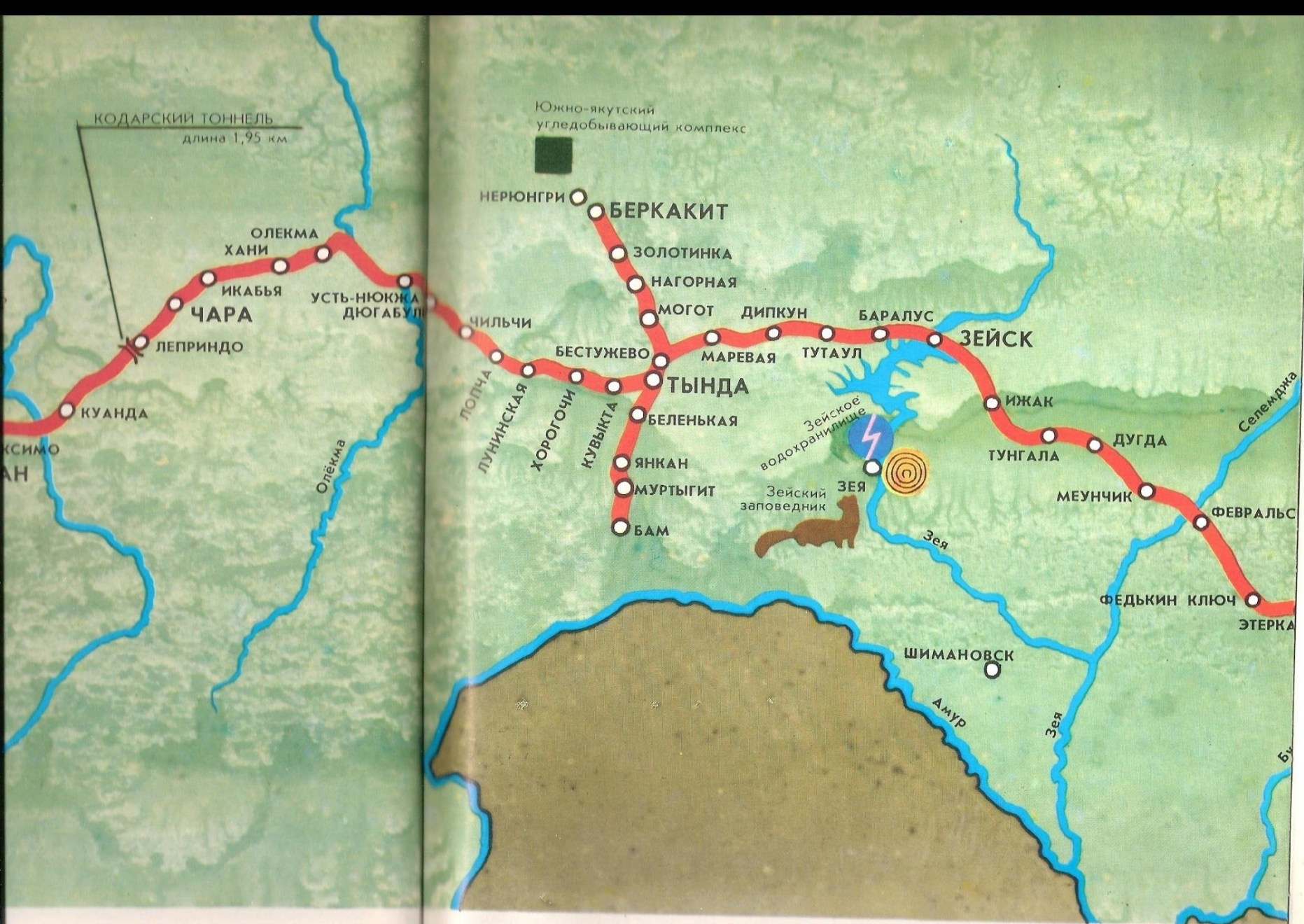
Taishet

Baikal-Amur Mainline Railway/Байкало-Амурская Магистраль
(in green)

Trans-Siberian Railway/Транссибирская магистраль (in red)









АМУР

ЗЕЙСК

КОМСОМОЛЬСК-НА-АМУРЕ

ХАБАРОВСК

ДУССЕ-АЛИНСКИЙ ТОННЕЛЬ
длина 1,8 км

ДИПКУН
БАРАЛУС

ТУТАУЛ

ИЖАК

ТУНГАЛА

ДУГДА

МЕУНЧИК

ФЕВРАЛЬСК

ФЕДЬКИН КЛЮЧ

ЭТЕРКАН

АЛОНКА

УРГАЛ I

СОЛОНИ

ТЕРБИ

СУЛУК

БЕРЕЗОВКА

ЭВОРОН

ГОРИН

ХУРМУЛИ

АМГУНЬ

ДЖАМКУ

АМУРСК

ШИМАНОВСК

Зейское
водохранилище

Зейский
заповедник

Зeya

Амур

Зeya

Бурея

Селемджа

Lake Baikal/Озеро Байкал



BAM—real work!



We Will Lay a Railway from Baikal to the Amur!



BAM—The Project of the Century!



4 kopek postage stamp, 1981:
“From [CPSU] Congress to Congress/
BAM Joins the System!”



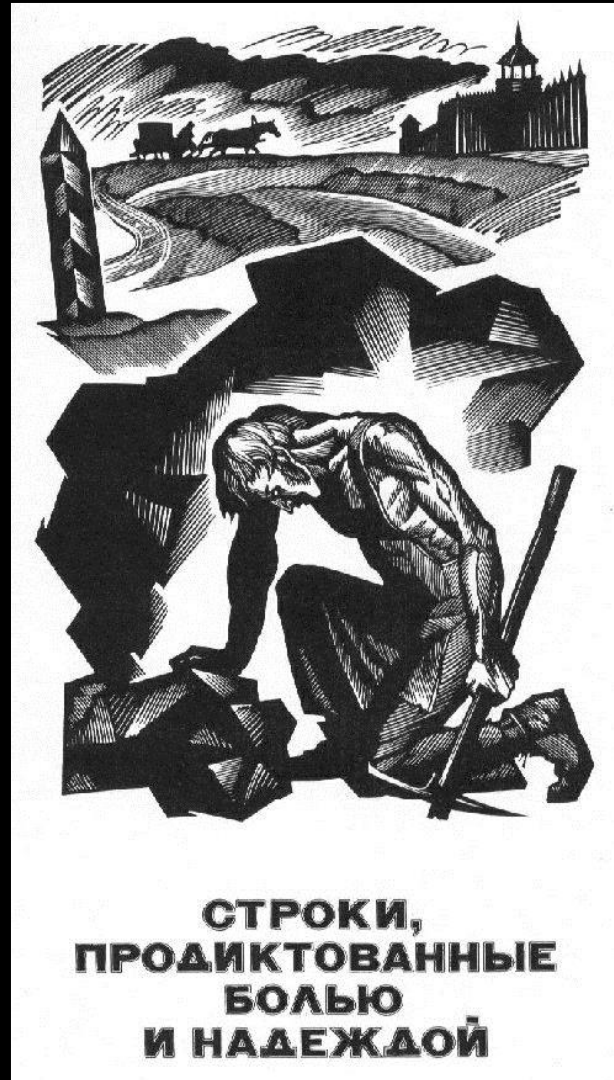
4 kopek postage stamp, 1975:
“BAM [Provides] Massive Natural Riches of Siberia
and the Far East in the Service of the Soviet People”



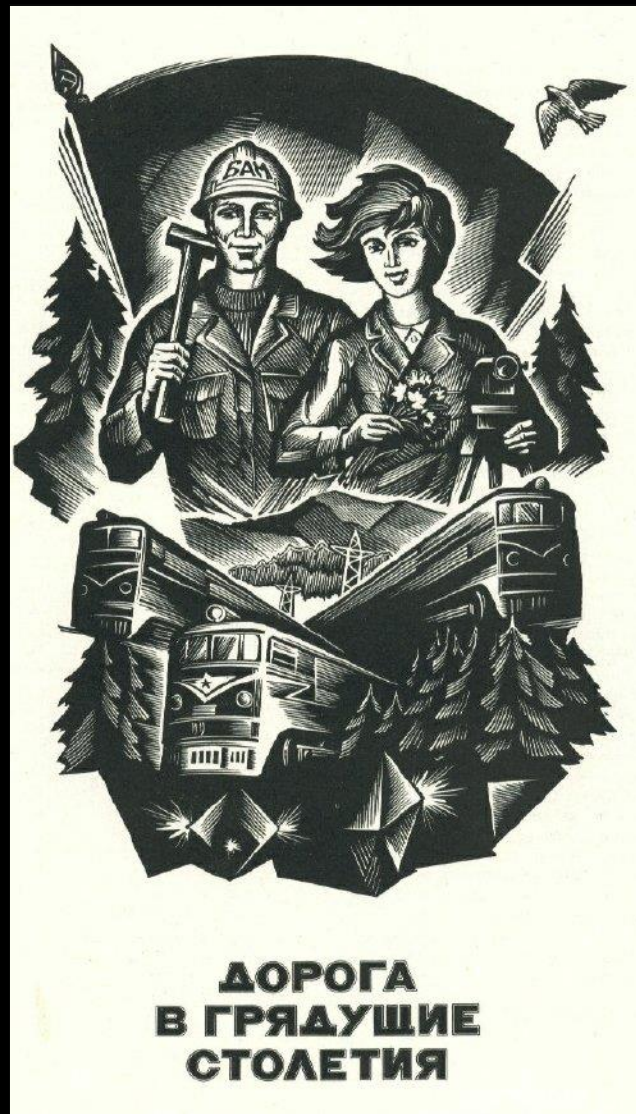
5 kopek postage stamp, 1984:
“The Baikal-Amur Mainline:
Construction of the Main Route Completed!”



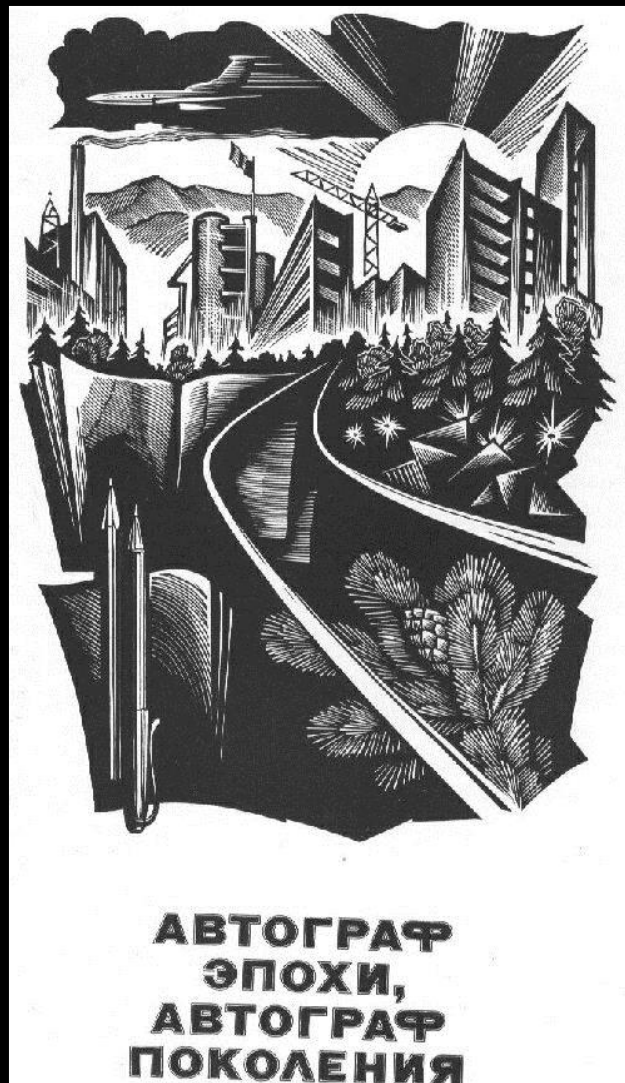
“Projects Driven by Pain and Hope”



“The Path to the Coming Century”



“Autograph of an Era, Autograph of a Generation”



“БАМ—The School of Work and Life”



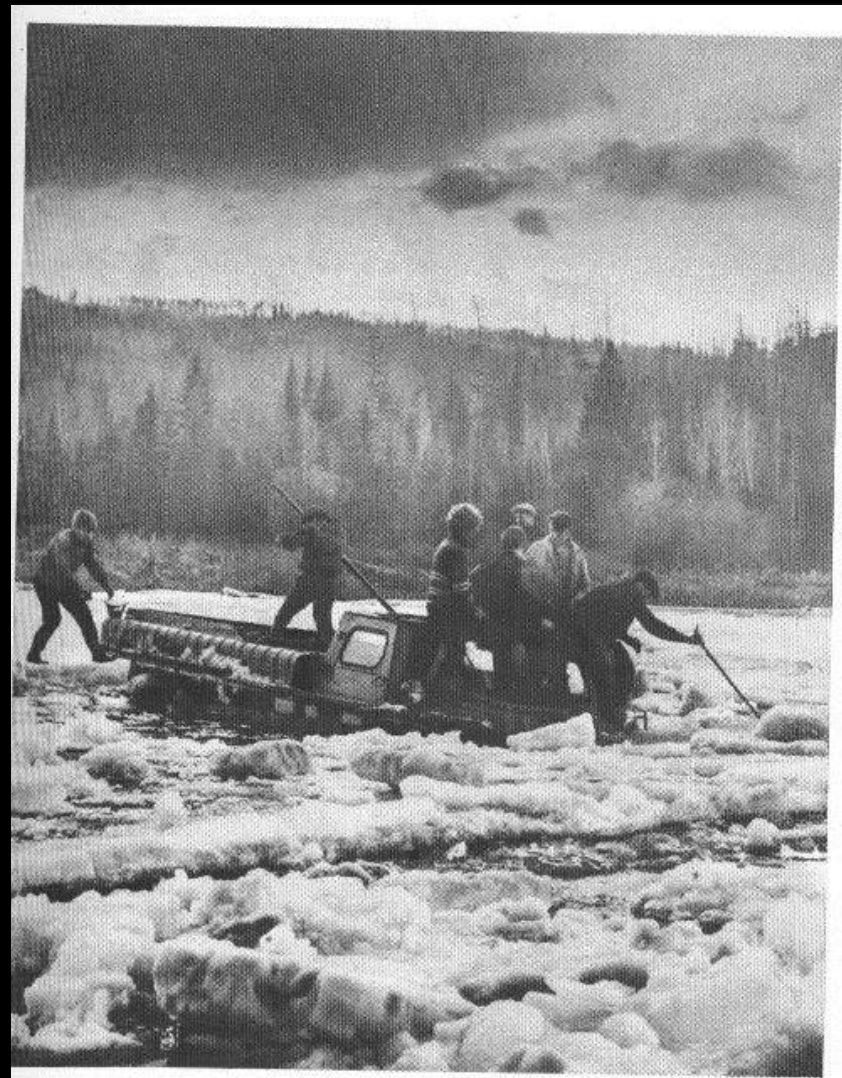
“You Are on the Right Track, Comrades!”



Traveling to a Construction Site by Helicopter



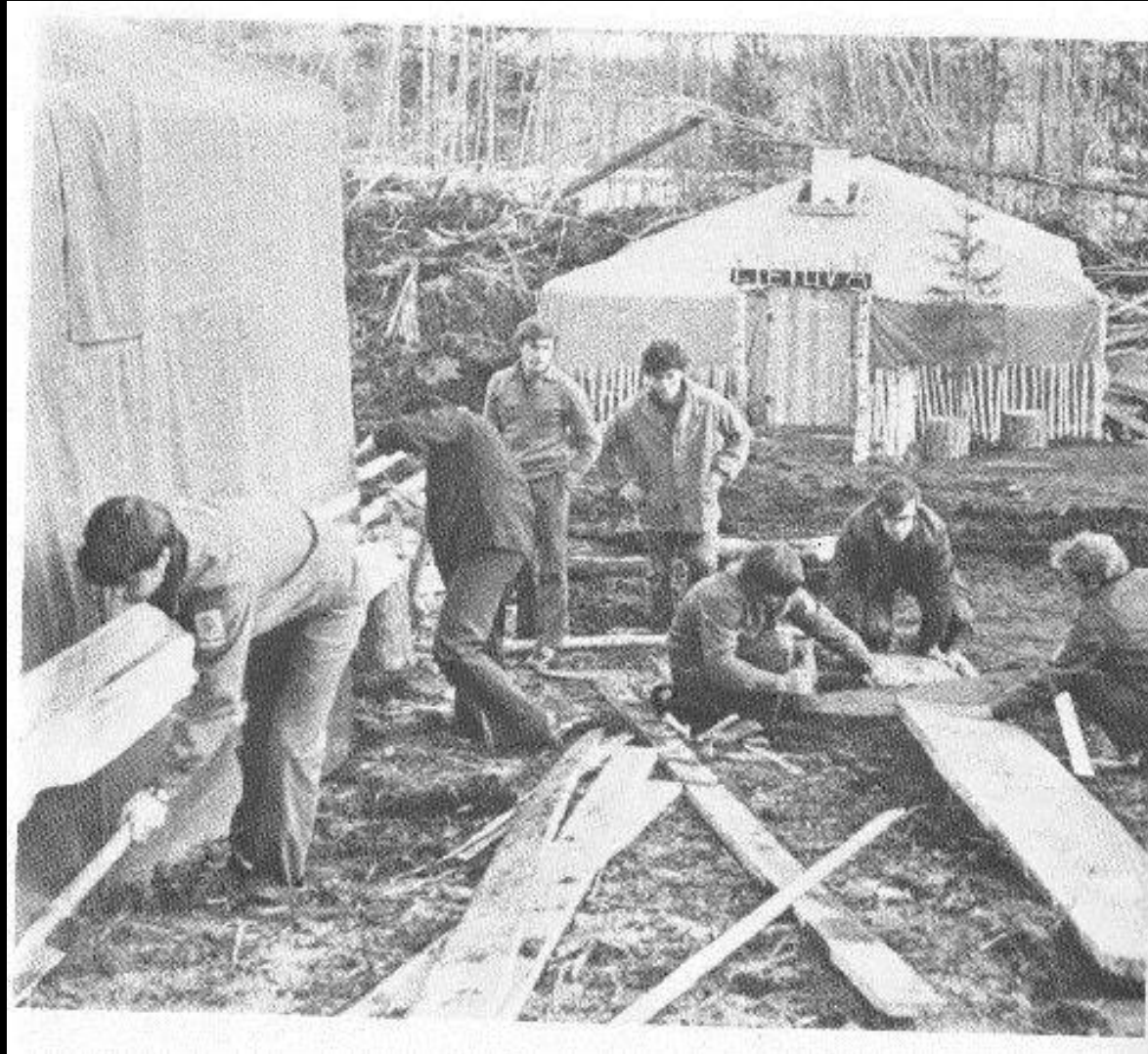
Crossing the Taiura River



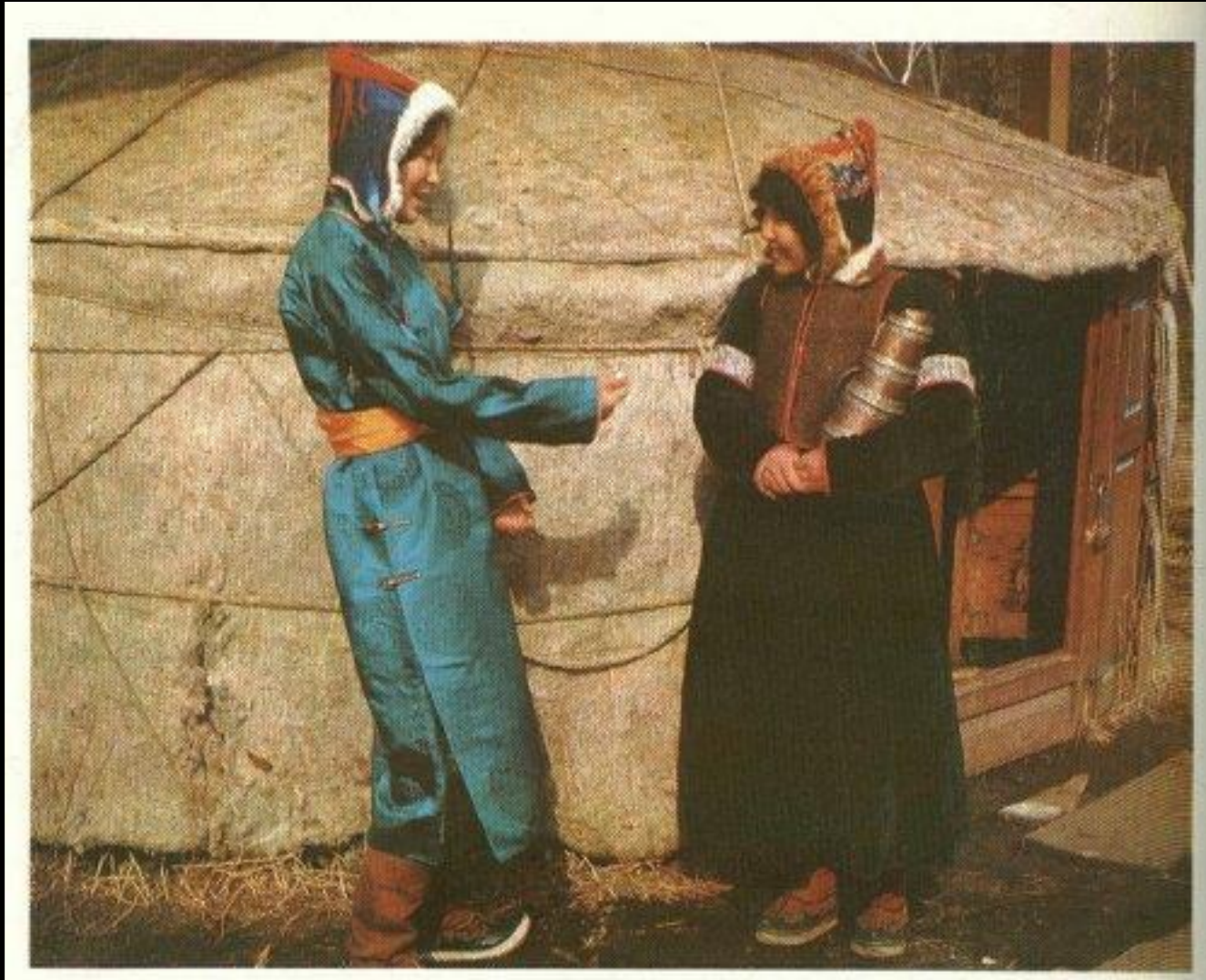
An Armenian Camp



A Lithuanian Camp



Indigenous Buriats in National Costumes



A BAmers and Two Evenk (Siberian indigenous group) girls

